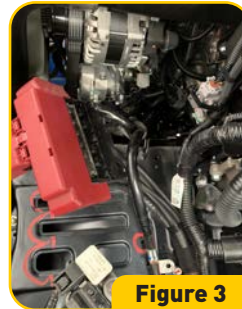


VEHICLE Mitsubishi Triton MV 2023+
PRODUCT Battery Tray
PRODUCT CODE BT111-Black

Hardware	QTY	Hardware	QTY
M8x1.25 Bolt RH 20L FULL THREAD	11	M6 x 1.0 RH NUT	3
M8 SPRING WASHER	11	M6 x 1.0 RH BOLT 20L FULL THREAD	3
M8 FLAT WASHER	11	M8 x1.25 FLANGE NUT	2
M6 FLAT WASHER	6		

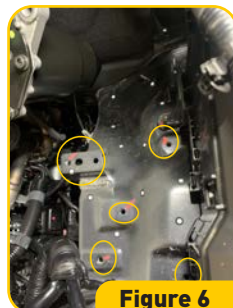
1. Undo the terminals of the OE battery then undo the OE tie down clamp. Remove the OE battery and its plastic case. **Figure 1,2**

2. Undo negative ground bolt and loom clips to make more slacks of terminals. **Figure 3,4**



3. Undo 5 bolts of the ECU & fuel filter bracket, move the whole assembly aside. Undo connectors & loom clips first can help with this step. **Figure 5,6**

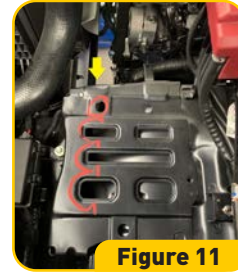
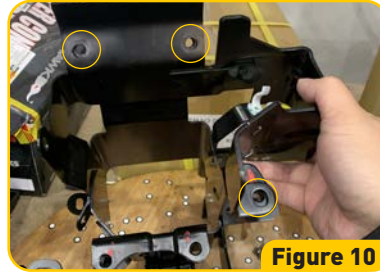
4. Fit three relocation brackets using supplied fasteners. 1-M6 bolt & 1-M8 bolt & nut for BT111-5, 1-M6 nut & 1-M8 bolt for BT111-6, 3-M8 bolts for BT111-7. **Figure 7,8**



VEHICLE Mitsubishi Triton MV 2023+
PRODUCT Battery Tray
PRODUCT CODE BT111-Black

5. Refit the ECU & Fuel filter bracket onto the relocation brackets, using 5 OE bolts. Remove the OE fuel filter guard by undoing 3 bolts. Refit all connectors and loom clips. **Figure 9,10**

6. Insert the BT111-4 nut plate from the arrow area, then fit the BT111-1 main tray with supplied 4-M8 bolts & 1-M6 bolt. Adjust the battery tray and move it away from intercooler hose as far as possible. **Figure 11,12**



7. Fit the DCDC bracket using supplied 2-M8 bolts and 1-M6 bolt & nut. Note: mounting slots for Redarc BCDC1240/1225 charger & ROADPOWER 100A fuse box on this bracket, fasteners not included. Fit them before placing this bracket if needed. **Figure 13,14**

8. Place the OE battery and secondary battery onto the battery tray. Keep them away from intercooler hose as far as possible. Then use the tie down clamp and 2 rods & nuts to secure batteries. If fitting with only OE battery, place the tie down rod to the center mounting holes. **Figure 15,16,17**

*Note: OE positive connector won't be able to move much, check the terminal positions before secure batteries.
If the heights of two batteries are different, proper spacer may be needed so they can be clamped down tightly.*

